

# Taking a Hard Look in the Mirror at Program Effectiveness

## **Joseph Stark**

Executive Director  
LA Unified Adult Education

## **Laura Chardiet**

Coordinator  
Program Policy &  
Development  
LA Unified Adult Education





# Hans and Franz





# How strong are your metrics?



**Need a  
Plan**



**Working  
On It**



**Built for  
Tomorrow**





# Why is talking about program effectiveness so hard?





# What exactly does program effectiveness

**program effectiveness**  
(*'prō-,gram i-'fek-tiv-ness*)

Different  
agencies want to define it  
differently.





# AB104

## AB104

### Adult Education Block Grant

- (b) (1) The chancellor and the Superintendent may require a consortium, as a condition of receipt of an apportionment, to submit any reports or data necessary to produce the report described in subdivision (a).
- (2) The chancellor and the Superintendent shall align the data used to produce the report described in subdivision (a) with data reported by local educational agencies for other purposes, such as data used for purposes of the federal Workforce Opportunity and Innovation Act (Public Law 113-128).
- (3) The Employment Development Department and the California Workforce Investment Board shall provide any assistance needed to align delivery of services across state and regional workforce, education, and job service programs.
- SEC. 40. Section 84920 is added to the Education Code, to read:
84920. (a) To the extent that one-time funding is made available in the Budget Act of 2015, consistent with the provisions of Section 84917, the chancellor and the Superintendent shall identify common measures for determining the effectiveness of members of each consortium in meeting the educational needs of adults. At a minimum, the chancellor and the Superintendent shall accomplish both of the following:
- (1) Define the specific data each consortium shall collect.
- (2) Establish a menu of common assessments and policies regarding placement of adults seeking education and workforce services into adult education programs to be used by each consortium to measure educational needs of adults and the effectiveness of providers in addressing those needs.
- (b) It is the intent of the Legislature that both of the following occur:
- (1) That the educational needs of adults in the state be better identified and understood through better sharing of data across state agencies.
- (2) That, at a minimum, the chancellor and the Superintendent shall enter into agreements to share data related to effectiveness of the consortia between their agencies and with other state agencies, including, but not necessarily limited to, the Employment Development Department and the California Workforce Investment Board.
- (c) The chancellor and the Superintendent shall identify, no later than January 1, 2016, the measures for assessing the effectiveness of consortia that will be used in the report that, pursuant to Section 84917, is to be submitted by September 30, 2016. These measures shall include, but not necessarily be limited to, all of the following:
- (1) How many adults are served by members of the consortium.
- (2) How many adults served by members of the consortium have demonstrated the following:
- (A) Improved literacy skills.
- (B) Completion of high school diplomas or their recognized equivalents.
- (C) Completion of postsecondary certificates, degrees, or training programs.
- (D) Placement into jobs.
- (E) Improved wages.
- (d) No later than November 1, 2015, the chancellor and the Superintendent shall submit to the Director of Finance, the state board, and the appropriate policy and fiscal committees in the Legislature a report of its progress in meeting the requirements of subdivisions (a) and (b).
- (e) The chancellor and the Superintendent shall apportion the funds appropriated for purposes of this section in the Budget Act of 2015 in accordance with both of the following:



# AB104

## AB104

### Adult Education Block Grant

- (b) (1) The chancellor and the Superintendent may require a consortium, as a condition of receipt of an apportionment, to submit any reports or data necessary to produce the report described in subdivision (a).
- (2) The chancellor and the Superintendent shall align the data used to produce the report described in subdivision (a) with data reported by local educational agencies for other purposes, such as data used for purposes of the federal Workforce Opportunity and Innovation Act (Public Law 113-128).
- (3) The Employment Development Department and the California Workforce Investment Board shall provide any assistance needed to align delivery of services across state and regional workforce, education, and job service programs.
- SEC. 40. Section 84920 is added to the Education Code, to read:
84920. (a) To the extent that one-time funding is made available in the Budget Act of 2015, consistent with the provisions of Section 84917, the chancellor and the Superintendent shall identify common measures for determining the effectiveness of members of each consortium in meeting the educational needs of adults. At a minimum, the chancellor and the Superintendent shall accomplish both of the following:
- (1) Define the specific data each consortium shall collect.
- (2) Establish a menu of common assessments and policies regarding placement of adults seeking education and workforce services into adult education programs to be used by each consortium to measure educational needs of adults and the effectiveness of providers in addressing those needs.
- (b) It is the intent of the Legislature that both of the following occur:
- (1) That the educational needs of adults in the state be better identified and understood through better sharing of data across state agencies.
- (2) That, at a minimum, the chancellor and the Superintendent shall enter into agreements to share data related to effectiveness of the consortia between their agencies and with other state agencies, including, but not necessarily limited to, the Employment Development Department and the California Workforce Investment Board.
- (c) The chancellor and the Superintendent shall identify, no later than January 1, 2016, the measures for assessing the effectiveness of consortia that will be used in the report that, pursuant to Section 84917, is to be submitted by September 30, 2016. These measures shall include, but not necessarily be limited to, all of the following:
- (1) How many adults are served by members of the consortium.
- (2) How many adults served by members of the consortium have demonstrated the following:
- (A) Improved literacy skills.
- (B) Completion of high school diplomas or their recognized equivalents.
- (C) Completion of postsecondary certificates, degrees, or training programs.
- (D) Placement into jobs.
- (E) Improved wages.
- (d) No later than November 1, 2015, the chancellor and the Superintendent shall submit to the Director of Finance, the state board, and the appropriate policy and fiscal committees in the Legislature a report of its progress in meeting the requirements of subdivisions (a) and (b).
- (e) The chancellor and the Superintendent shall apportion the funds appropriated for purposes of this section in the Budget Act of 2015 in accordance with both of the following:



# AB104

- (1) How many adults are served by members of the consortium.
- (2) How many adults served by members of the consortium have demonstrated the following:
  - (A) Improved literacy skills.
  - (B) Completion of high school diplomas or their recognized equivalents.
  - (C) Completion of postsecondary certificates, degrees, or training programs.
  - (D) Placement into jobs.
  - (E) Improved wages.





# CAEP Summary Report



08/09/2020  
23:03:56

## CAEP Summary

Page 1 of 1  
AEBG20175

**Agency:** 1180 - Los Angeles Unified School District (LAUSD)  
**Member:** 259 - Los Angeles Unified School District

**Program Year:** 2019-2020  
**Consortium:** 27 - Los Angeles Regional Adult Education Consortium

Program Areas* (A)	Literacy Gains (Pre/Post)			CAEP Outcomes							Services					
	Enrollees (B)	Enrollees with pre/post (C)	EFL Gains Achieved (D)	Enrollees (E)	Other Literacy Gains (F)	HSD/HSE Achieved (G)	Post- Secondary Achieved (H)	Enter Employment Achieved (I)	Increase Wages Achieved (J)	Transition Post-Sec Achieved (K)	Enrollees (L)	Enrollees with any Services Received (M)	Supportive Services Received (N)	Training Services Received (O)	Transition Services Received (P)	Career Services Received (Q)
English Language Learner (ESL/ELL)	24,880	16,144	11,583	29,912	29,844	236	502	10,010	3,468	4,281	33,676	33,460	14,123	11,637	82,676	36,666
ABE/ASE	11,095	6,175	4,419	18,696	18,675	1,175	824	3,599	1,374	17,826	22,508	22,431	5,945	4,482	55,215	24,404
Career and Technical Education (CTE)	4,310	2,529	1,890	12,863	12,828	543	1,947	3,120	1,444	11,914	14,626	14,580	4,676	4,948	46,261	16,319
Workforce Preparation	1,395	809	649	5,974	5,973	323	1,651	1,731	924	5,913	6,030	6,027	2,184	2,505	20,124	7,214
Pre-Apprenticeship	188	99	44	1,318	1,317	54	159	200	172	1,316	1,405	1,403	519	551	4,728	1,501
Adults Training for Child School Success	719	481	315	861	861	4	5	134	54	25	955	953	308	335	2,176	1,061
Programs for Adults with Disabilities	336	197	129	840	765	22	107	146	57	702	919	918	404	315	2,646	1,048
No Designated Program											212	86	8	5	173	74
<b>Total</b>	<b>42,923</b>	<b>26,394</b>	<b>19,029</b>	<b>70,464</b>	<b>70,263</b>	<b>2,357</b>	<b>5,195</b>	<b>18,940</b>	<b>7,493</b>	<b>41,977</b>	<b>80,331</b>	<b>79,858</b>	<b>28,167</b>	<b>24,778</b>	<b>213,999</b>	<b>88,287</b>
Students in two or more programs	<b>6,681</b>	<b>4,199</b>	<b>3,084</b>	<b>13,639</b>	<b>13,609</b>	<b>558</b>	<b>1,835</b>	<b>3,709</b>	<b>1,680</b>	<b>11,197</b>	<b>14,811</b>	<b>14,783</b>	<b>5,552</b>	<b>5,450</b>	<b>14,782</b>	<b>14,779</b>
Total unduplicated students	<b>33,625</b>	<b>20,556</b>	<b>14,687</b>	<b>51,490</b>	<b>51,321</b>	<b>1,475</b>	<b>2,330</b>	<b>13,620</b>	<b>5,025</b>	<b>25,747</b>	<b>59,600</b>	<b>59,167</b>	<b>19,388</b>	<b>16,183</b>	<b>59,146</b>	<b>58,976</b>

\*All learners in multiple programs are counted in each program in which they are enrolled.



# LA Unified Adult Education's Approach





# LA Unified Adult Education's Approach

Cut Fat  
Count Calories  
Eliminate Sugar  
Increase Fiber  
More Cardio  
Chew slowly





# LA Unified Adult Education's Approach

Cut Fat  
Count Calories  
Eliminate Sugar  
Increase Fiber  
More Cardio  
Chew slowly



Drink 1% Milk





# LA Unified Adult Education's Approach

Cut Fat  
Count Calories  
Eliminate Sugar  
Increase Fiber  
More Cardio  
Chew Slowly

## What is our “Drink 1% Milk”?



Drink 1% Milk





# LA Unified Adult Education's Approach

*(data not available)*









## Workforce Investment Act

Visual TOFPro - Version: 4.6 - Build: 15      C&S&S 2012      Prepared by: Administrator



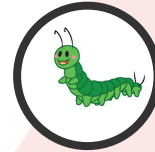


# LA Unified Adult Education's Approach

## Persisters (attendance)



**Egg**  
0 hours



**Caterpillar**  
>0 to <12 hours



**Chrysalis**  
12 to < 20 hours



**Butterfly**  
20+ hours



## Workforce Investment Act

08/22/2012

11:14:19

Payment Points Summary by Program

Student Records Dated between 07/01/2005 and 06/30/2006 & Consistent Records Dated between 07/01/2005 and 06/30/2006

Page: 1

Agency: 1180 - Los Angeles Unified Adult

		Payment Points												Total PP		
		Funding				CDD Tracking				CDD Tracking				CDD Tracking		
		CDD Tracking				CDD Tracking				CDD Tracking				CDD Tracking		
		CDD Tracking				CDD Tracking				CDD Tracking				CDD Tracking		
		CDD Tracking				CDD Tracking				CDD Tracking				CDD Tracking		
		CDD Tracking				CDD Tracking				CDD Tracking				CDD Tracking		
		CDD Tracking				CDD Tracking				CDD Tracking				CDD Tracking		
		CDD Tracking				CDD Tracking				CDD Tracking				CDD Tracking		
		CDD Tracking				CDD Tracking				CDD Tracking				CDD Tracking		
		CDD Tracking				CDD Tracking				CDD Tracking				CDD Tracking		
		CDD Tracking				CDD Tracking				CDD Tracking				CDD Tracking		
		CDD Tracking				CDD Tracking				CDD Tracking				CDD Tracking		
		CDD Tracking				CDD Tracking				CDD Tracking				CDD Tracking		
		CDD Tracking				CDD Tracking				CDD Tracking				CDD Tracking		
		CDD Tracking				CDD Tracking				CDD Tracking				CDD Tracking		
		CDD Tracking				CDD Tracking				CDD Tracking				CDD Tracking		
		CDD Tracking				CDD Tracking				CDD Tracking				CDD Tracking		
		CDD Tracking				CDD Tracking				CDD Tracking				CDD Tracking		
		CDD Tracking				CDD Tracking				CDD Tracking				CDD Tracking		
		CDD Tracking				CDD Tracking				CDD Tracking				CDD Tracking		
		CDD Tracking				CDD Tracking				CDD Tracking				CDD Tracking		
		CDD Tracking				CDD Tracking				CDD Tracking				CDD Tracking		
		CDD Tracking				CDD Tracking				CDD Tracking				CDD Tracking		
		CDD Tracking				CDD Tracking				CDD Tracking				CDD Tracking		
		CDD Tracking				CDD Tracking				CDD Tracking				CDD Tracking		
		CDD Tracking				CDD Tracking				CDD Tracking				CDD Tracking		
		CDD Tracking				CDD Tracking				CDD Tracking				CDD Tracking		
		CDD Tracking				CDD Tracking				CDD Tracking				CDD Tracking		
		CDD Tracking				CDD Tracking				CDD Tracking				CDD Tracking		
		CDD Tracking				CDD Tracking				CDD Tracking				CDD Tracking		
		CDD Tracking				CDD Tracking				CDD Tracking				CDD Tracking		
		CDD Tracking				CDD Tracking				CDD Tracking				CDD Tracking		
		CDD Tracking				CDD Tracking				CDD Tracking				CDD Tracking		
		CDD Tracking				CDD Tracking				CDD Tracking				CDD Tracking		
		CDD Tracking				CDD Tracking				CDD Tracking				CDD Tracking		
		CDD Tracking				CDD Tracking				CDD Tracking				CDD Tracking		
		CDD Tracking				CDD Tracking				CDD Tracking				CDD Tracking		
		CDD Tracking				CDD Tracking				CDD Tracking				CDD Tracking		
		CDD Tracking				CDD Tracking				CDD Tracking				CDD Tracking		
		CDD Tracking				CDD Tracking				CDD Tracking				CDD Tracking		
		CDD Tracking				CDD Tracking				CDD Tracking				CDD Tracking		
		CDD Tracking				CDD Tracking				CDD Tracking				CDD Tracking		
		CDD Tracking				CDD Tracking				CDD Tracking				CDD Tracking		
		CDD Tracking				CDD Tracking				CDD Tracking				CDD Tracking		
		CDD Tracking				CDD Tracking				CDD Tracking				CDD Tracking		
		CDD Tracking				CDD Tracking				CDD Tracking				CDD Tracking		
		CDD Tracking				CDD Tracking				CDD Tracking				CDD Tracking		
		CDD Tracking				CDD Tracking				CDD Tracking				CDD Tracking		
		CDD Tracking				CDD Tracking				CDD Tracking				CDD Tracking		
		CDD Tracking				CDD Tracking				CDD Tracking				CDD Tracking		
		CDD Tracking				CDD Tracking				CDD Tracking				CDD Tracking		
		CDD Tracking				CDD Tracking				CDD Tracking				CDD Tracking		
		CDD Tracking				CDD Tracking				CDD Tracking				CDD Tracking		
		CDD Tracking				CDD Tracking				CDD Tracking				CDD Tracking		
		CDD Tracking				CDD Tracking				CDD Tracking				CDD Tracking		
		CDD Tracking				CDD Tracking				CDD Tracking				CDD Tracking		
		CDD Tracking				CDD Tracking				CDD Tracking				CDD Tracking		
		CDD Tracking				CDD Tracking				CDD Tracking				CDD Tracking		
		CDD Tracking				CDD Tracking				CDD Tracking				CDD Tracking		
		CDD Tracking				CDD Tracking				CDD Tracking				CDD Tracking		
		CDD Tracking				CDD Tracking				CDD Tracking				CDD Tracking		
		CDD Tracking				CDD Tracking				CDD Tracking				CDD Tracking		
		CDD Tracking				CDD Tracking				CDD Tracking				CDD Tracking		
		CDD Tracking				CDD Tracking				CDD Tracking				CDD Tracking		
		CDD Tracking														

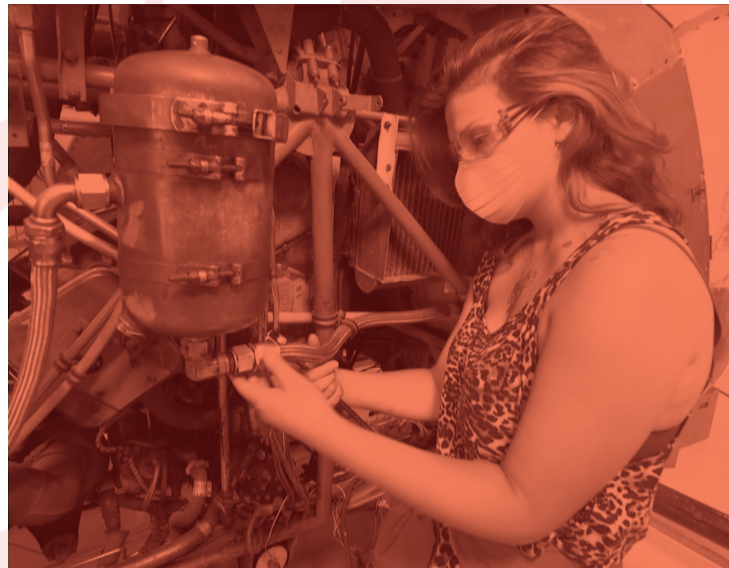


# What's Next for LA Unified Adult Education?

## Student Tools for Educational Pathways (STEP)

STEP courses provide students with the resources, training and support they need to be successful in school by preparing them in the following areas:

- Orientation and pathways counseling
- Digital literacy and onboarding
- Student information and assessment





# Taking a Hard Look in the Mirror at Program Effectiveness

## **Joseph Stark**

Executive Director  
LA Unified Adult Education  
[joseph.stark@lausd.net](mailto:joseph.stark@lausd.net)

## **Laura Chardiet**

Coordinator  
Program Policy &  
Development  
LA Unified Adult Education  
[laura.chardiet@lausd.net](mailto:laura.chardiet@lausd.net)

